







INTRODUCTION

Bait Mohammed bin Khalifa is an important landmark in Abu Dhabi's history. As a component of the World Heritage Cultural Sites of Al Ain, the house offers valuable insights into the changing social, historical and architectural traditions of the nation during the 1950s and 1960s.

This historic home was built in 1958 for the late Sheikh Mohammed bin Khalifa Al Nahyan (1909-1979), the father-in-law of the late Sheikh Zayed bin Sultan Al Nahyan, Founding Father of the United Arab Emirates. Sheikh Mohammed bin Khalifa was also the grandfather of the current President of the UAE, His Highness Sheikh Khalifa bin Zayed Al Nahyan.

The house was built at the height of the UAE's Transition Period (1930s-1960s), a time in which hybrid architectural styles evolved as a result of the economic impact of oil exploration and discovery. A symbol of a changing way of life, Bait Mohammed bin Khalifa is an example of the fusion of traditional architectural styles with modern building materials and techniques. While the domestic character of Bait Mohammed bin Khalifa was different from the traditional forts used as residences of tribal leaders, it retained the time-honoured tradition of a leader opening up his home to the community.

This home was once an eminent landmark and focal point for the community of Al Ain, as the late Sheikh Mohammed was a highly esteemed figure. Now conserved, Bait Mohammed bin Khalifa resumes its place as a vibrant hub for city residents by opening its doors as a community centre.

Bait Mohammed bin Khalifa extends a warm invitation to all to explore, share and participate in the revitalisation of this historic home and community space.



EXHIBITION

The permanent exhibition at Bait Mohammed bin Khalifa gives an overview on the history of both the home itself and of the wider World Heritage property of the Cultural Sites of Al Ain.

With a focus on Al Ain during the Transition Period, visitors to the exhibition will learn not only about the evolution of the house itself but also about the transformation of the surrounding city over the last 60 years.

The interactive experience “Sheikh Mohammed bin Khalifa Al Nahyan: Life and Legacy” provides an introduction to the man and his story, and honours Sheikh Mohammed’s position as an important member of the Al Nahyan family, the long-time rulers of Abu Dhabi. Visitors can enjoy a fascinating glimpse into the daily life of Sheikh Mohammed, learning about his interests and occupations, from agriculture and the management of palm trees to the art of falconry.

Passing through the exhibition’s displays, visitors will hear different musical tracks by performers such as the poet Osha Al Suwaidi “Fatat Al Arab”, Ali bin Rogah and Umm Kulthum, artists popular at the time of the house’s construction. Also available to listen to are oral histories from elderly Al Ain residents, who recount their experiences of living and working in the city through the decades.

Entry to the exhibition, and to all elements of Bait Mohammed bin Khalifa, is free of charge.

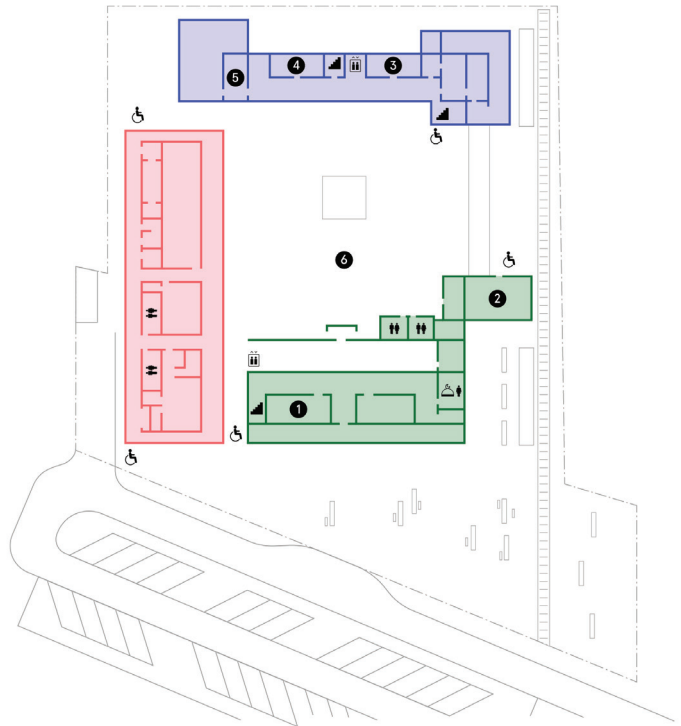
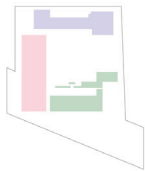
SITE OFFERINGS AND VENUE HIRE RATES

FIRST FLOOR

- ① Room 1

GROUND FLOOR

- ② Room 2
- ③ Room 3
- ④ Room 4
- ⑤ Meeting Room
- ⑥ Courtyard



Café — *Notes Café* is a casual and modern space with a local touch which features a mini bakery in the restaurant. Started in 2016, this homegrown concept has evolved into a popular chain, with locations throughout the emirate. The café's quest for excellence is at the heart of everything they do and it is managed with enthusiasm, knowledge, sustainability and creativity in mind.

RFLCT Creative Arts Centre — Bait Mohammed bin Khalifa is collaborating with RFLCT Creative Arts Centre to offer a series of workshops to the community. Established in 2017 by an Emirati mother-daughter duo, RFLCT aims to empower each and every member of society to express themselves creatively through exploring all forms of art. Open to students of all ages and skill levels, RFLCT offers online, group, and one-on-one classes, as well as corporate events, with its programme covering visual arts, performing arts, culinary arts, craftsmanship and more. For the full list of RFLCT Creative Arts Centre workshops taking place at Bait Mohammed bin Khalifa, please visit www.rflct-arts.com.



COMMUNITY SPACES FOR HIRE

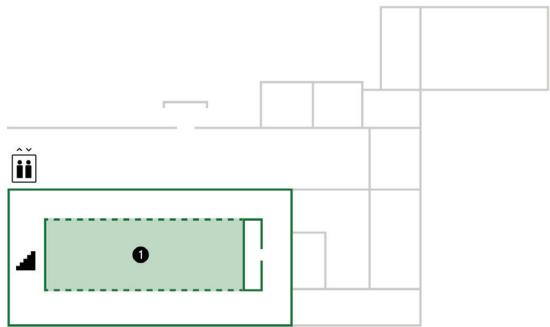
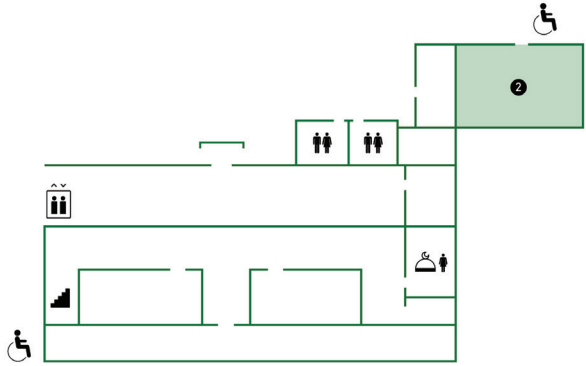
MAJLIS BUILDING

FIRST FLOOR

- ① Room 1

GROUND FLOOR

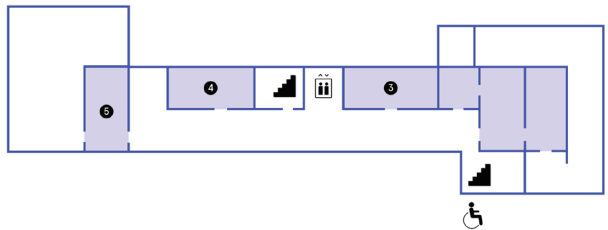
- ② Room 2
- 🕌 Prayer room
- 🚻 Restroom
- 📈 Stairs
- 🚪 Elevator
- ♿ Wheelchair Access



FAMILY QUARTERS

GROUND FLOOR

- ③ Room 3
- ④ Room 4
- ⑤ Meeting Room
- 📈 Stairs
- 🚪 Elevator
- ♿ Wheelchair Access





Bait Mohammed bin Khalifa has been rehabilitated to be used primarily as a community centre, with spaces available for hire by community groups and public or private institutions. Reservation requests can be made by email, phone or onsite.

	Area	Capacity	Hire Period	Full Price
Room 1 <i>This spacious room on the first floor of the majlis building is perfect for events, programmes, performances and more. It also opens to the outdoors, giving a “terrace” feel and adding another dimension to events.</i>	86 sqm	Up to 50	3 hours/full day	AED 2,000/4,000 (plus 5% VAT)
Room 2 <i>The second-largest room in the house is a dedicated community space that can host a variety of workshops.</i>	55 sqm	Up to 15	3 hours/full day	AED 400/800 (plus 5% VAT)
Room 3 <i>Can be used to host interactive workshops, study sessions and lectures.</i>	19 sqm	8 – 12	3 hours/full day	AED 250/500 (plus 5% VAT)
Room 4 <i>Can be used to host interactive workshops, study sessions and lectures.</i>	24 sqm	8 – 15	3 hours/full day	AED 250/500 (plus 5% VAT)
Meeting Room <i>A suitable room for presentations, brainstorming sessions and meetings.</i>	20 sqm	8 – 12	3 hours/full day	AED 250/500 (plus 5% VAT)
Courtyard <i>A spacious, open area located at the centre of the site, the courtyard can be utilised for exhibitions and large-scale events.</i>	1500 sqm 100 sqm (F&B) 45 sqm (Retail) 68 sqm (Offices)	Up to 250	Full day hire ONLY	AED 6000 (plus 5% VAT)

Government entitled to 30% discount on all hires.
Partners entitled to 50% discount on all hires.



LOCATION AND HOURS OF OPERATIONS

Opening hours

Saturday to Thursday

10am – 8pm

Friday

2pm – 10pm

For enquiries,
please contact us on
+971 3 711 8335.



Bait Mohammed bin Khalifa, Al Mu'tarid area,
Zayed bin Sultan Street, Al Ain

Located near the cultural sites of
Al Mu'tarid Oasis, Al Jahili Fort and
Al Ain Oasis.

For more information, please visit
baitmohammedbinkhalifa.ae